

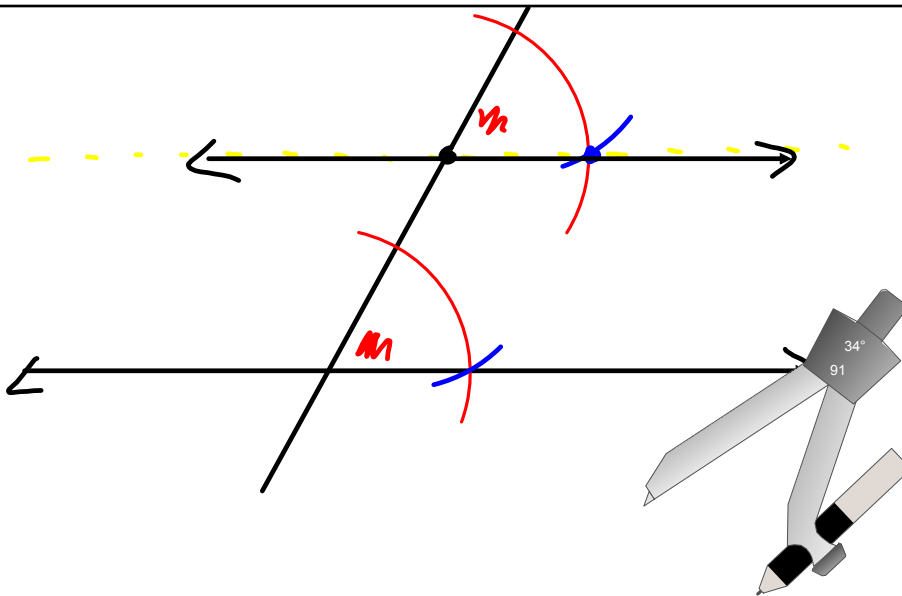
3-7L: Mid-Unit Review & Quiz

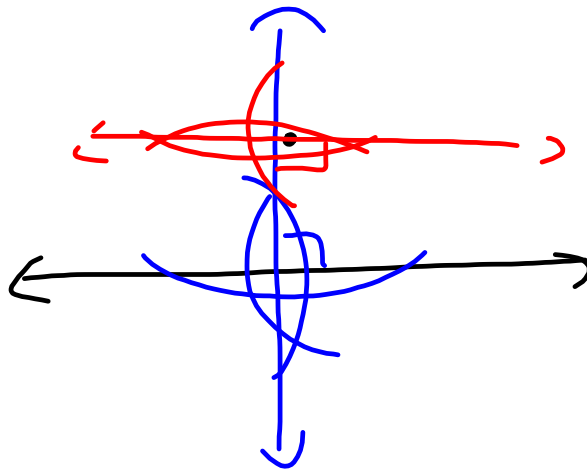
Agenda:

- Check & Review Constructions Packet
- Turn in CR#2 & Test 1 Remediations
- Pre-Quiz (Front Side) - individual
- Quiz

Homework:

- Problem Set 3-7LAB - Back side of notes; use separate notebook paper for 3 & 4 as needed





Practice before the quiz:

1. How would you solve the following systems of equations?

<p>a) $y = 8x + 5$ $y = 7x + 4$ $8x + 5 = 7x + 4$</p> <p>Substitution or Elimination Why?</p>	<p>b) $17 = 2x + 5y$ $7 = -2x + 3y$</p> <p>Substitution or Elimination Why? $= \& \text{ OPP COEFF}$</p>	<p>Solve for x: $11 = 8x + 5y$ $18 = 7x - 4y$</p> <p>$44 = 32x + 20y$ $90 = 35x - 20y$ <hr/> $134 = 67x$ $2 = x$</p>
---	--	---

2. Find the measures, writing a reason for congruency or supplementary:

a) $m\angle 1 =$ _____ reason: _____

b) $m\angle 2 =$ _____ reason: _____

c) $m\angle 3 =$ _____ reason: _____

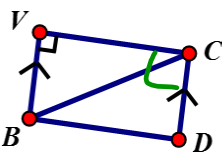
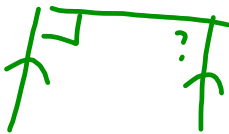
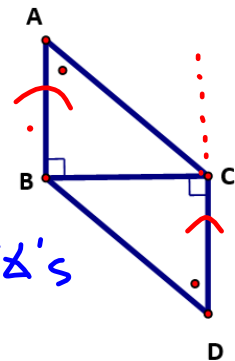
d) $m\angle 4 =$ _____ reason: _____

e) $m\angle 5 =$ _____ reason: _____

f) $m\angle 6 =$ _____ reason: _____

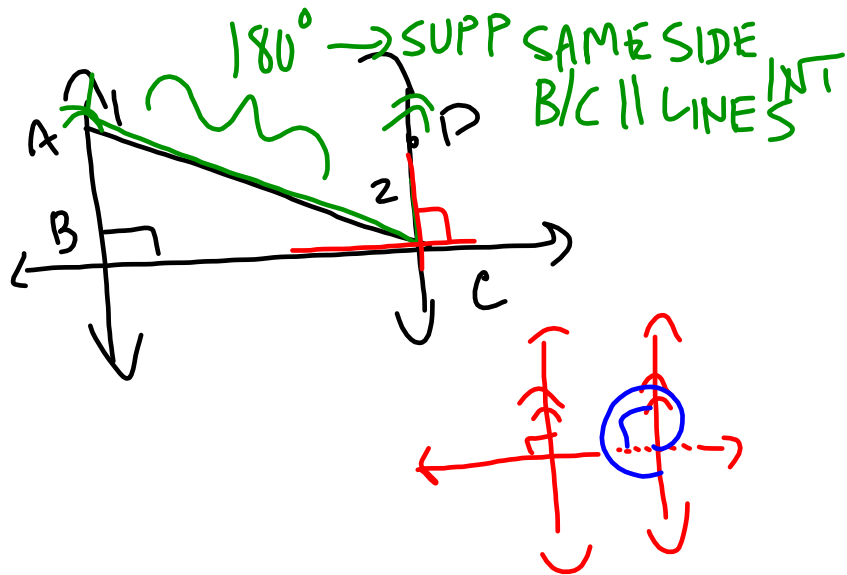
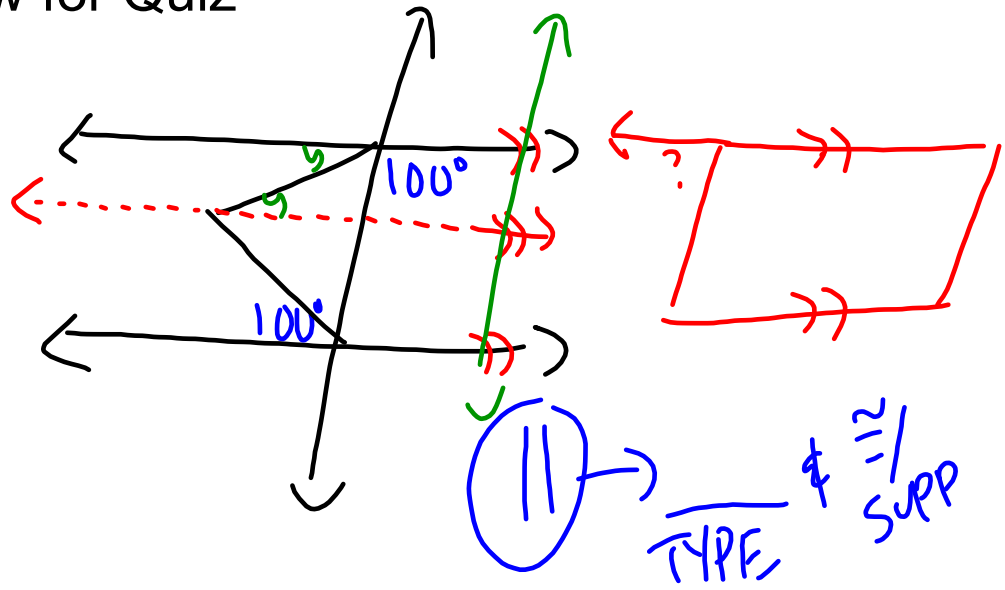
3. Given the drawing, what can you conclude about the following:

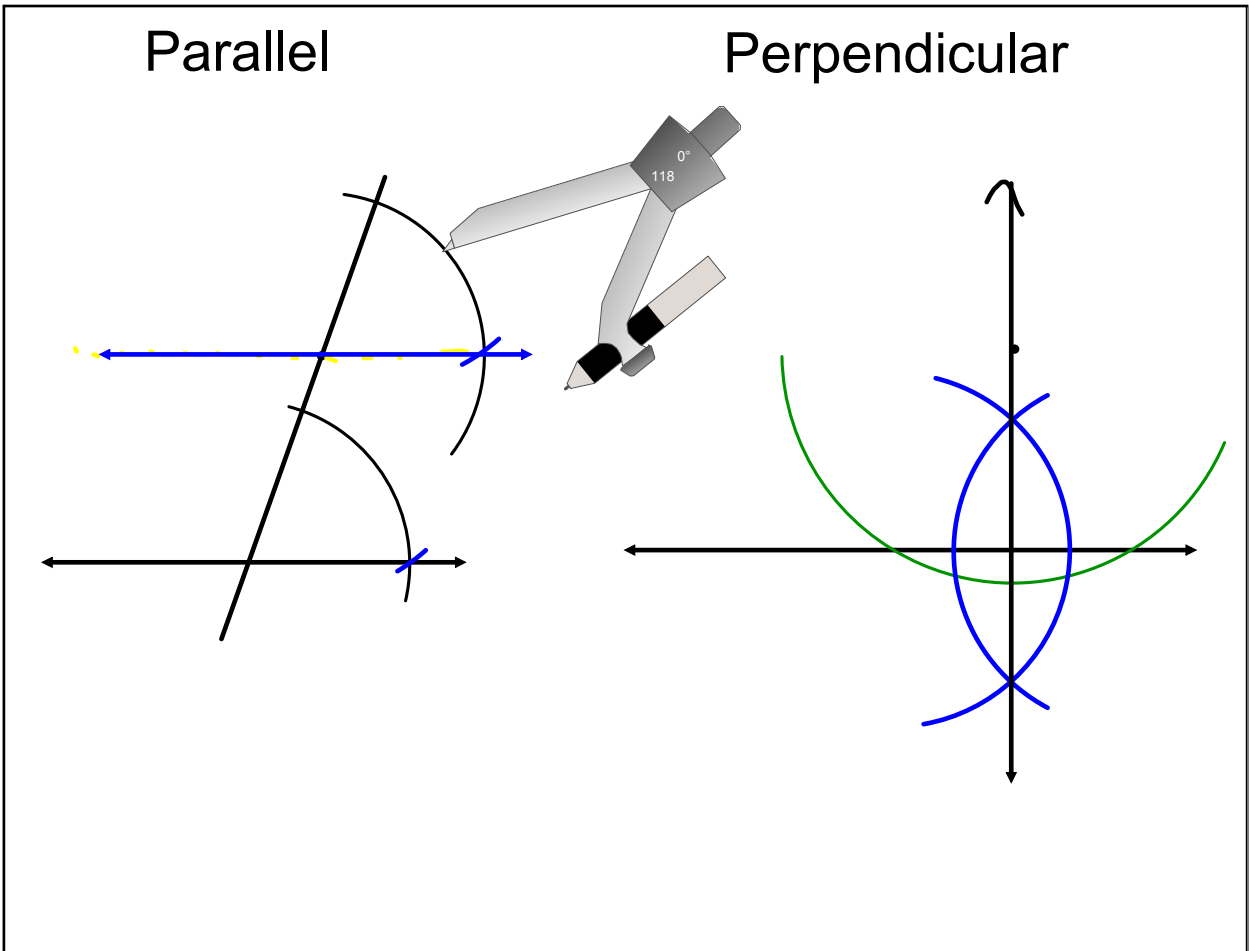
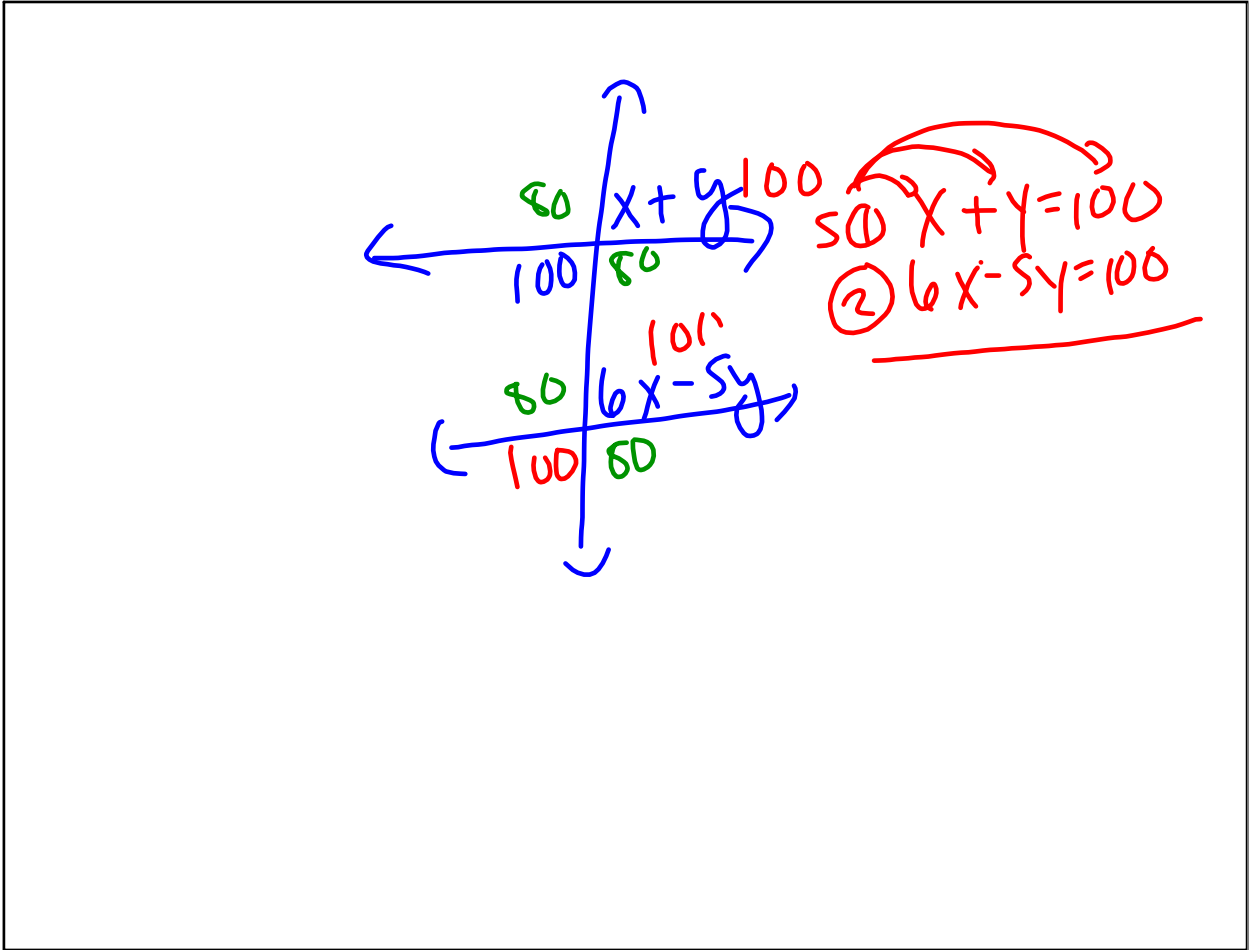
- \overline{AB} & \overline{CD} ? They are || because || LINES \perp TO SAME LINE
- $\angle ABC$? It is a RIGHT angle because \perp LINES \rightarrow RT \angle 's

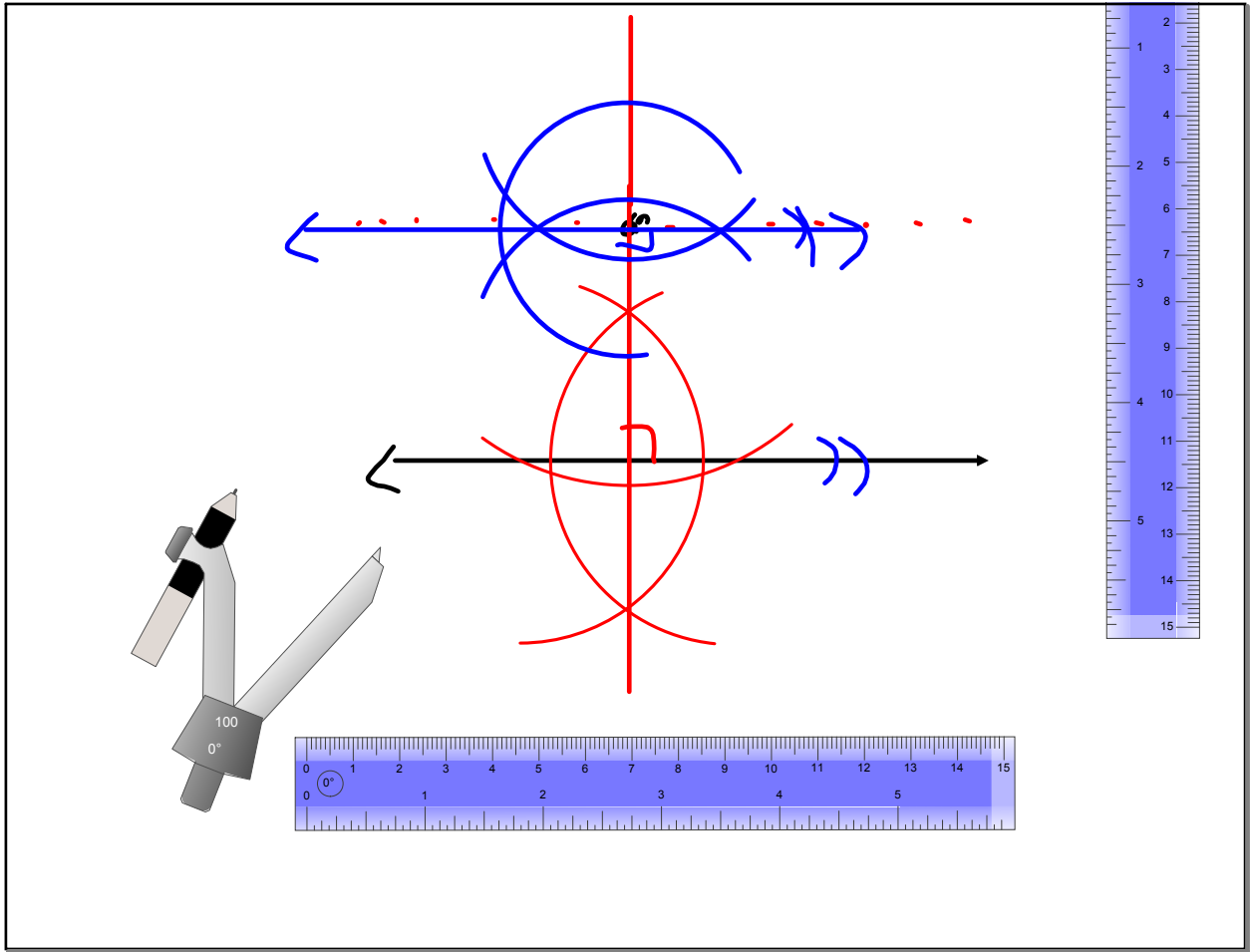


4. Given the drawing, what can you conclude about \overline{VC} & \overline{CD} ? They are \perp because \perp TRANSVERSAL THM

Review for Quiz







Attachments

3-6 Notes 2015 LAB.docx