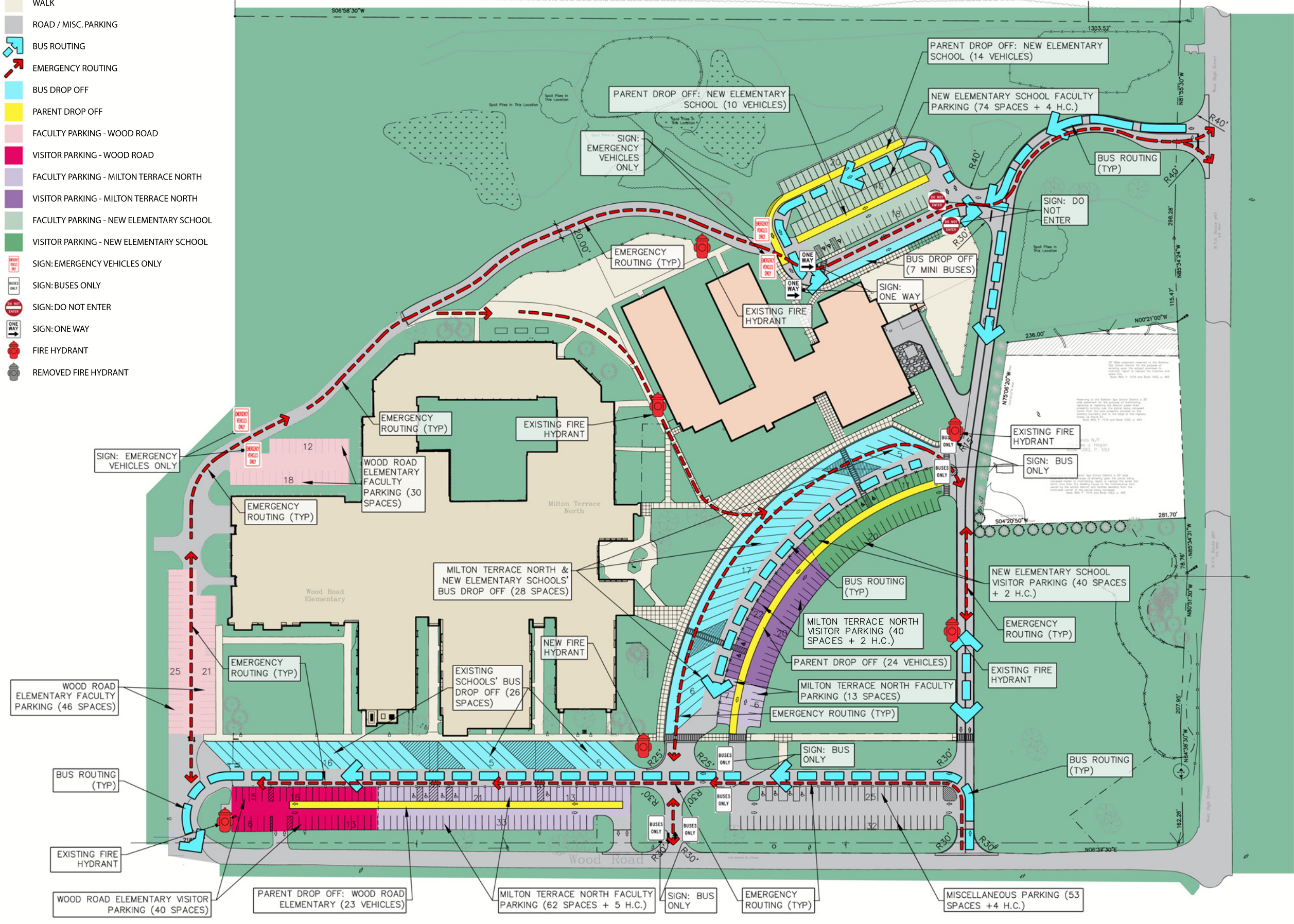


LEGEND

- TURF
- EXISTING BUILDING
- NEW ELEMENTARY SCHOOL
- WALK
- ROAD / MISC. PARKING
- BUS ROUTING
- EMERGENCY ROUTING
- BUS DROP OFF
- PARENT DROP OFF
- FACULTY PARKING - WOOD ROAD
- VISITOR PARKING - WOOD ROAD
- FACULTY PARKING - MILTON TERRACE NORTH
- VISITOR PARKING - MILTON TERRACE NORTH
- FACULTY PARKING - NEW ELEMENTARY SCHOOL
- VISITOR PARKING - NEW ELEMENTARY SCHOOL
- SIGN: EMERGENCY VEHICLES ONLY
- SIGN: BUSES ONLY
- SIGN: DO NOT ENTER
- SIGN: ONE WAY
- FIRE HYDRANT
- REMOVED FIRE HYDRANT



G:\PROJ-07\07822_BALLSTON SPA_SCHOOL\3\07822\07WOOD ROAD\DD_ELEV.V_3_P&R_CIRCULATION_DIAGRAM.DWG 8/15/2011 11:18 AM

**BALLSTON SPA CENTRAL SCHOOL DISTRICT
 NEW ELEMENTARY SCHOOL
 NEW CONSTRUCTION AND SITE WORK**

Project Title

10-05-2011

Rev	Date	By	Reason

Drawn By: MAP
 Checked By: STM
 Proj. # 07022.01
 CSArch Project # 137-10-01
 Date:

Sheet Title

**SITE
 CIRCULATION
 DIAGRAM:
 FINAL**

Sheet No.